



User Guide

Kawneer:

Add on Louvre

Revit 2017



Kawneer BIM components

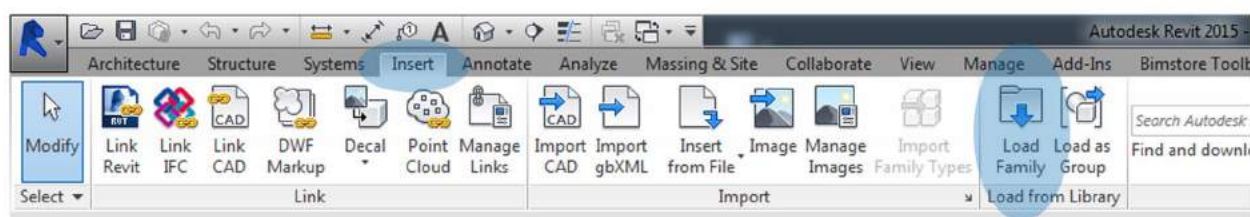
The Kawneer range of Louvre components have been created as Revit 'Face Based' Families containing manufacturer specific information and render materials.

This user guide has been included to provide guidance on how to correctly use and make the most of the content.

Loading the components into your project

You can load the chosen component into your project using the following method.

1. Open the Revit file containing your 'project' (.rvt) and navigate to an appropriate view.
2. Go to the insert tab on the Revit ribbon and select 'Load Family'



3. Navigate to the location of the saved component that you have downloaded, select the desired component and click 'Open'.
4. The component is now embedded into your project and ready to be placed. They can be selected from the 'Project Browser / Families / Windows' selector within your project BIM.

Placing the Components

Now embedded into your project the components can be selected from either the 'Windows' list in the 'Project Browser' and dragged into your model and placed, or by selecting 'Window' in the 'Architecture' tab and selecting the family from the 'Type Selector' drop down in the Properties Box. Place the component on selected face and desired location.

These components have been created as face based families, this allows the user to simply attach the component to any surface. Ensure that you have the desired family selected and hover over the surface to attach. Go to either a 3D, plan or elevation view to place the component and select 'Place on Face' or 'Place on Work Plane' under the 'Modify/Placement' tab. (You can create a reference line, name it and place on it).

Manufacturer Specific Data

The components contain technical and manufacturer specific data to assist the user when creating their project and/or when scheduling the components. To access the data embedded into the components, including COBie data, simply select the component and click the 'Edit Type' button at the head of the 'Properties' tab.

Using the Components

To create a new size, select the louvre, click on 'Edit Type' then 'Duplicate' and rename to your chosen size, then update the 'Height' and 'Width' to your preferred dimensions and select 'OK'.

Kawneer offer a range of options for their content and these have been built into the component. In order to access these and apply please use the following method:

1. Go to a suitable view and select the component.
2. Once the family is selected, the 'Properties' box will appear on the screen. Under the heading 'Other' are the instance parameters to be filled in for facilities management purposes.
3. Under the 'Materials and Finishes' heading the the options to change the material of the louvre frame and louvre blades.
4. Under the heading 'Construction' is the parameter 'VentilatedArea' - this will give the ventilated area of the louvre depending on size/setting out. Always consult with Kawneer for accurate ventilated areas.
5. To include the louvres as part of a window system, nest these components directly to your window families, lock parameters, then load into projects.

Add On Louvre - Type A:

Under the heading 'Construction', enter your preferred 'NumberOfBlades' - refer to the parameters just above it 'NoBladesMin' & 'NoBladesMax' for min and max blades allowed within size - If mix/max is exceeded it will default to the min or max and the 'Error' tick box will be selected.

Add On Louvre - Type B:

Under the heading 'Construction', enter your preferred offset 'a' (blade offset from bottom) and 'b' (blade offset from top) - refer to the parameters just above it 'aMin' & 'aMax' and 'bMin' & 'bMax' for min and max offset sizes - If mix/max is exceeded it will default to the min or max and the 'Error' tick box will be selected.

To include the louvres as part of a window system, nest these components directly to your window families, lock parameters, then load into projects.

Other Notes

These components are for design intent only and the data contained within should be treated as such. Please contact the manufacturer for more details and product literature.

You can add this component to your company template file, they will then be available without loading when starting a new project.

Revision

Version 1.0 - First Issue



Spaceworks
Benton Park Road
Newcastle Upon Tyne
NE7 7LX

+44(0)844 800 6660
info@bimstore.co.uk
www.bimstore.co

© copyright bimstore 2019